

4

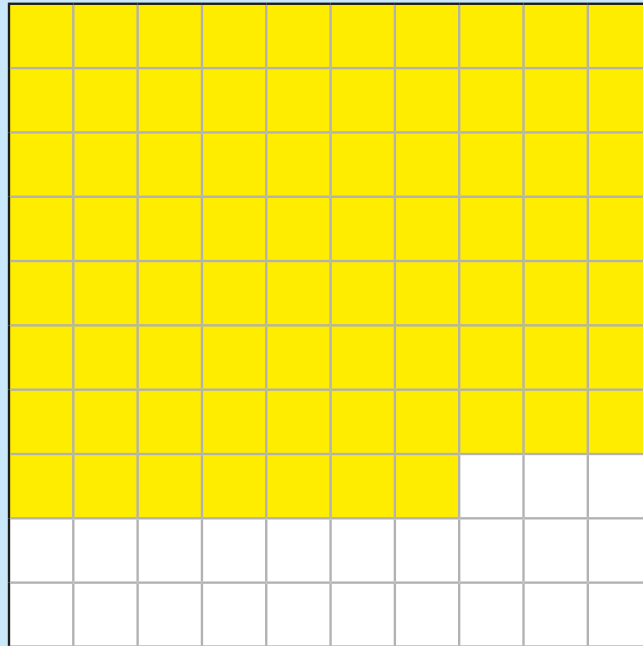
DECIMALS

White
Rose
Maths





The hundred square represents one whole.



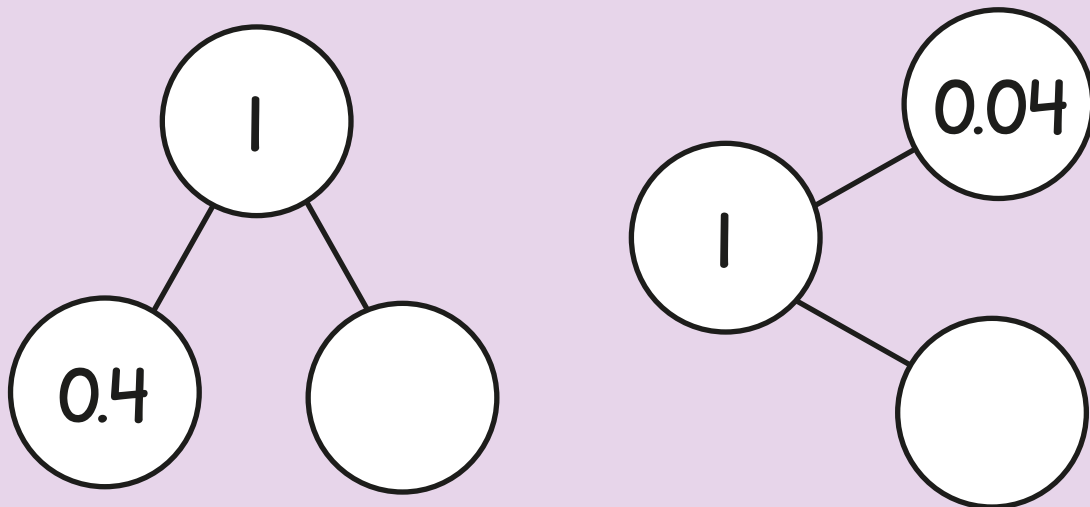
How much of the hundred square is shaded?

Give your answer as a fraction.

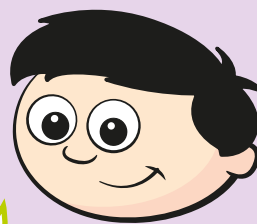
How much of the hundred square is **not** shaded?

Give your answer as a decimal.

2 Complete the part-whole models.






3



I am making 1.63 on the place value chart.

Draw counters to complete Dexter's number.

Ones	Tenths	Hundredths
		

4 Write $<$, $>$ or $=$ to compare the numbers.

$$0.32 \quad \bigcirc \quad 0.23$$

$$0.59 \quad \bigcirc \quad 0.6$$

$$0.5 \quad \bigcirc \quad 0.07$$

5 Match the fractions to their decimal equivalent.

$$\frac{3}{100}$$

$$\frac{1}{2}$$

$$\frac{3}{10}$$

$$\frac{3}{4}$$

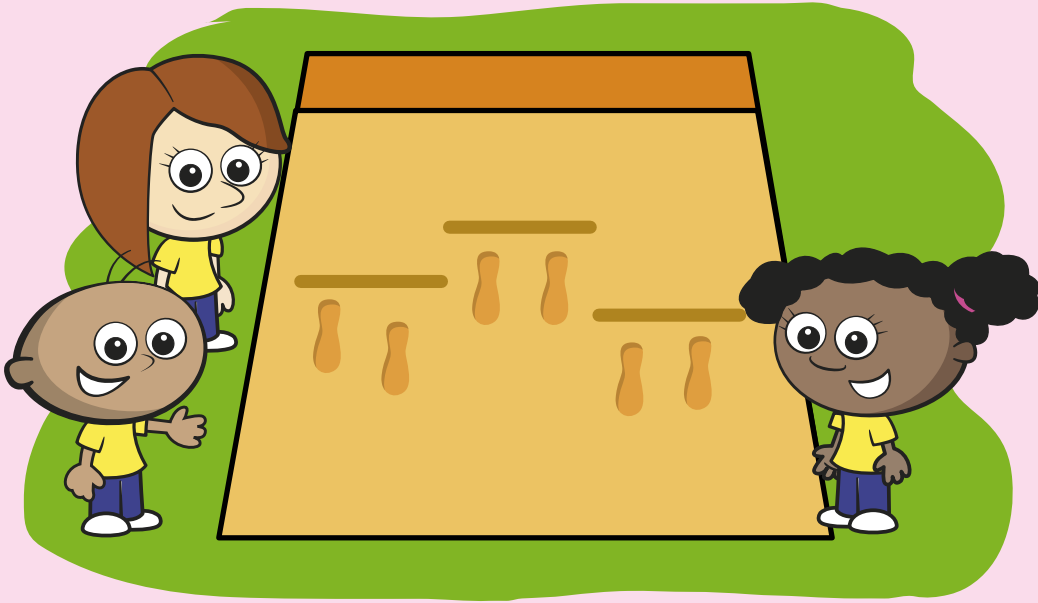
$$0.5$$

$$0.75$$

$$0.3$$

$$0.03$$

- 6 Three children are in a long jump competition.



Rosie jumps 1.49 metres.

Tommy jumps 0.92 metres.

Whitney jumps 1.6 metres.

Order their jumps from longest to shortest.

 m m m

Round Rosie's jump to the nearest metre.

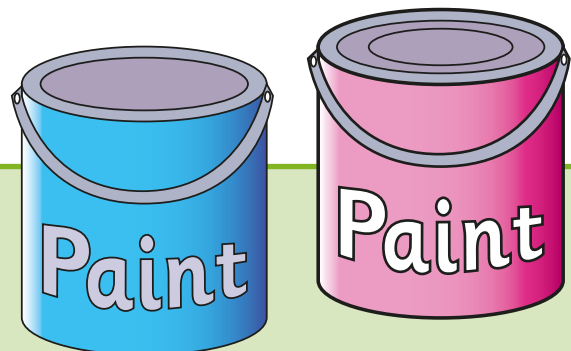
 m

7 Scott has 1 litre of paint.

He uses $\frac{5}{10}$ of the paint on the wall and $\frac{2}{10}$ of the paint on the door.

How many litres of paint does Scott have left?

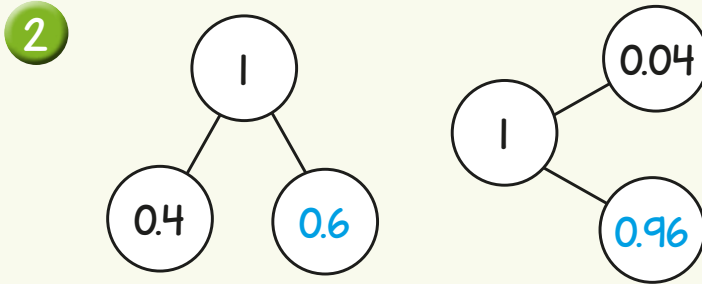
Give your answer as a decimal.



Answers



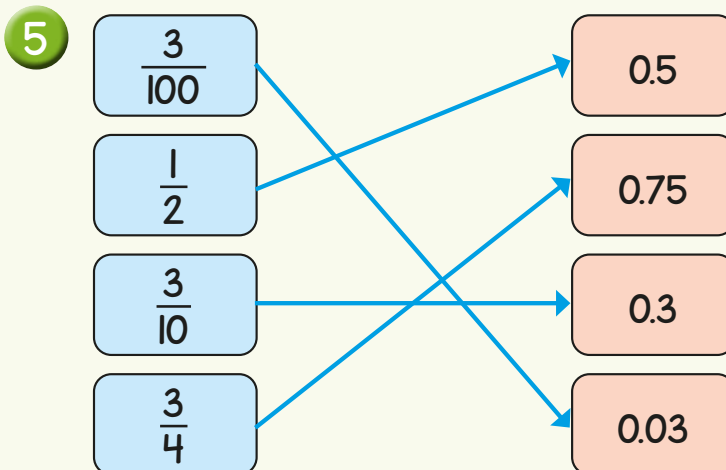
1 $\frac{77}{100}$ 0.23



3

Ones	Tenths	Hundredths
●	● ● ● ● ● ●	● ● ●

- 4
- 0.32 > 0.23
 0.59 < 0.6
 0.5 > 0.07



6 1.6 m, 1.49 m, 0.92 m
 1 m

7 0.3 litres