

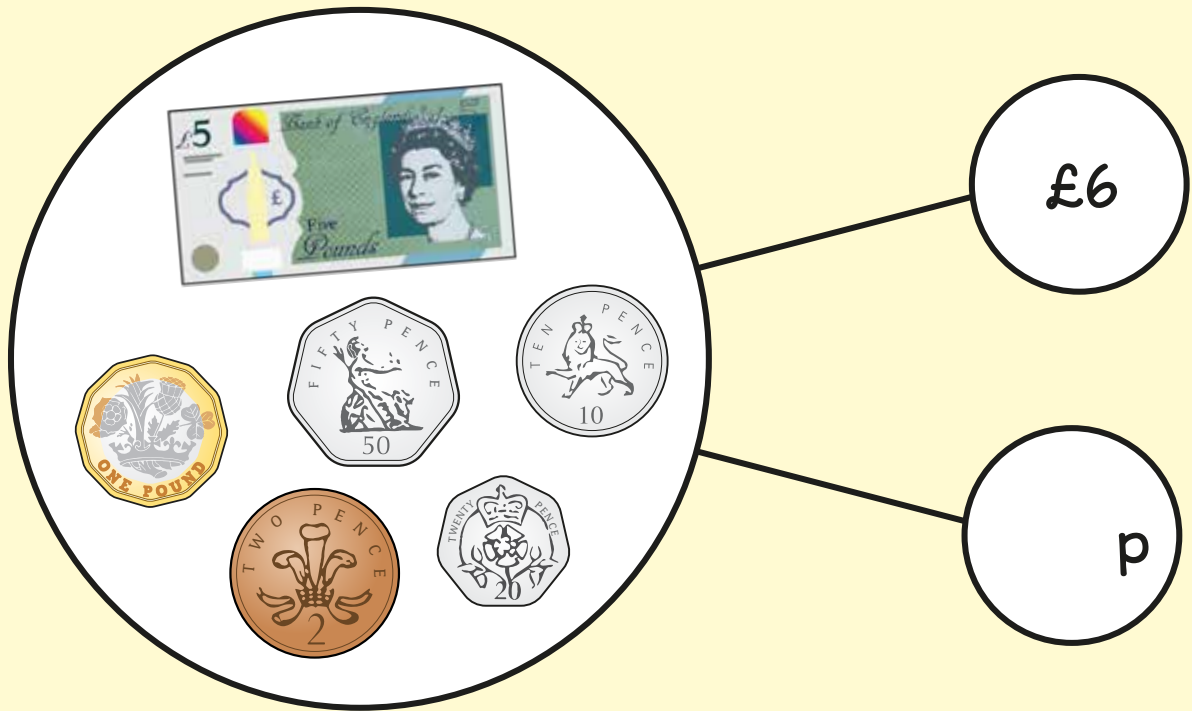
4

# MONEY

White  
Rose  
Maths



- 1 Complete the number sentence for the part-whole model.



$$£6 + \boxed{\phantom{00}} \text{ p} = £ \boxed{\phantom{00}}$$

2 Circle the notes and coins needed to make £7.36



3 Nijah has this money in her purse.



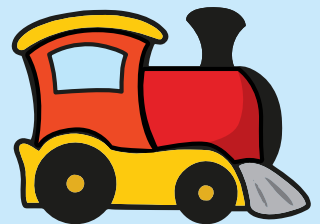
Circle the item or items she can buy.



£8.99



£9.39



£9.99

4 The boxes should have the same total.

Draw arrows to show where each coin needs to go.



5 Write  $>$ ,  $<$  or  $=$  to compare the amounts.

£2.37  £2.30

£15.46  15 pounds and 64p

eight pounds and sixty pence



6 Here is a receipt. **Estimate** the total cost.

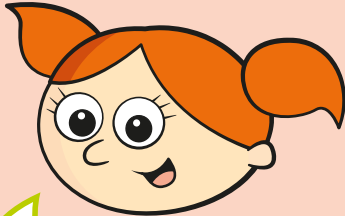
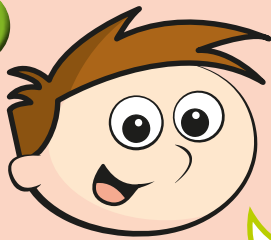
Receipt	
Pasta	£1.30
Beans	80p
Milk	75p
Bread	£1.70
Carrots	£2.20
Total	_____

Blank area for working out the estimate.

7

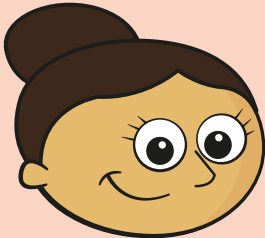
Teddy

Alex



I have got £12.15

I have got twelve pounds and fifty pence.



Dora

I have got

Write the amounts in order from least to most money.

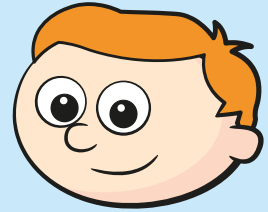
---

**least** **most**

What is the difference between Teddy's money and Alex's money?

8

Ron saves 4 fifty pence pieces on Monday.



He saves 4 twenty pence pieces on Tuesday.

He saves 1 two pound coin on Wednesday.

How much has he saved altogether?



A large, empty rectangular box with a green border, intended for the student to write their answer to the problem.

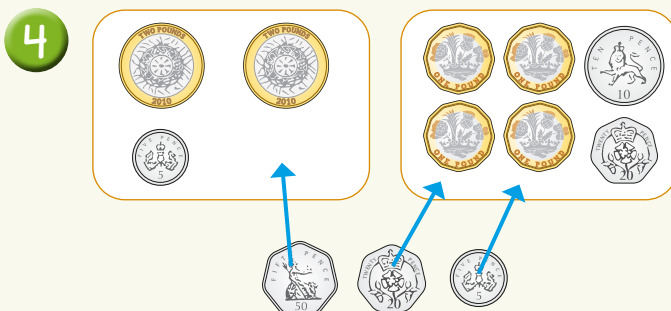


# Answers



1  $£6 + 82p = £6.82$

2 £5 note plus correct combination of coins to make £2.36.



5  $\pounds 2.37 > \pounds 2.30$

$\pounds 15.46 < 15 \text{ pounds and } 64\text{p}$

eight pounds and sixty pence  $>$



6 Approximately  $\pounds 7$

7  $\pounds 12.13$      $\pounds 12.15$      $\pounds 12.50$   
35p

8  $\pounds 4.80$